

Roads / Highways Projects



Irrigation Projects



Railway Projects



Power Projects



Building / Runways Projects



SRRCL

SRI RAJA RAJESWARI CONSTRUCTIONS (INDIA) PRIVATE LIMITED

About Us

Sri Ravuri Muthaiah, Chairman & Managing Director, the founder of **SRI RAJA RAJESWARI CONSTRUCTIONS (INDIA) PVT. LIMITED (SRRC)** (formerly **SRI Raja Rajeswari Constructions**) is an entrepreneur with a clear vision to establish the brand **SRRC** in the Construction Industry. He in this field since 35 years is enormously experience in the field of Civil Engineering & Infrastructure Construction.

In the year 2007, **Sri R Muthaiah** has signed a partnership deed with his elder son **Sri Ravuri Ramu**, bringing him into the business for diversifying the new projects and for taking new challenging works and in the year 2014 the partnership firm converted to Private Limited Company w.e.f. 25-03-2014.

SRRC is one of the fastest growing partnership firm in the current scenario of high competition in the Civil Engineering Infrastructure Business, **SRRC** is known for timely delivery of projects with the highest safety and quality.

SRRC has been awarded by the State Government of Andhra Pradesh for the **Malyala Approach Channel Project** for completion to the utmost satisfaction of the employer and has been recognized for quality, high standard and fastest delivery

SRRC has also received many applauses from the Irrigation and Agriculture Ministers including Engineer-in-Chief and Superintending Engineer for consistent performance in timely delivery of projects as per clients's expectation..

SRRC has been expanding its presence across the country and is today present many major projects are going on across more than 5 states with deployment of **Plant & Machinery** over **Rs.50 Crores**.

CORE BUSINESS AREA



Irrigation Projects



Building/Runways Projects



Power Projects



Railway Projects



Roads/Highways Projects

VISION

To contribute in nation building by diversified activities adhering to the highest traditions of safety, quality and ethics.

MISSION

Serve the country offering the highest level of customer satisfaction by consistently delivering innovative solutions to customer needs using technology, knowledge, skills and commitments.

Key Management



Sri. Ravuri Muthaiah, (Chairman & Managing Director)

The founder of **SRI RAJA RAJESWARI CONSTRUCTIONS (INDIA) PVT. LIMITED (SRRC)** formerly SRI RAJA RAJESWARI CONSTRUCTIONS is an entrepreneur with a clear vision to establish the brand of **SRRC**. He is in this field for the past **35 years** and has enormous experience in the fields of Civil Engineering Industry; he has successfully executed many Major Irrigation Projects and Power Projects. **Sri Muthaiah's** passion for completing the challenging works in time with Quality and speed has taken the firm to new heights.

His uncompromising nature in principles and work ethics, his keen observation and interest in the work taken the firm to the high standard. His ability to provide Strategic and Operational leadership has helped the SRRC to build large and powerful teams.



Sri. Ravuri Ramu, (Director)

He is a **B.Tech (ECE) and MBA**, he is a technocrat and oversees the new growth opportunities for **SRRC**. He is a firm believer for using the best technology for service delivery. He has been instrumental in adopting the latest technology, maintaining high standards and hygienic construction sites. His decision making & project management skills with his technological experience to ensure the progress of the projects keep in the right direction.

He has thorough knowledge in cost estimation and is effective public relations. He is a good administrator; his knowledge in finance coupled with expertise in Infrastructure industry made him an expert in quoting tenders.

WORKS COMPLETED AS A PRIME CONTRACTOR

| Sl. No | Name of the Project | Client | Contract Value (Rs.in Crs.) |
|--------|--|--|-----------------------------|
| 1 | AVR HNSS Project Phase-I - Package No.1 (Sub work): Execution of earthwork and forming embankment of Malyala approach Channel from Km (-) 4.806 to KM (-) 3.722 with 253.000 level at KM (-) 4.806 and from KM (-) 3.722 to KM (-) 1.922 from (+) 261.900 level to a level as per the approved HPs sections, designs and drawings and specifications etc. | Superintending Engineer, AVR HNSS Circle No.1 Kurnool | 13.32 |
| 2 | Investigation, Design and Earthwork excavation of GNSS Main canal from KM.311.000 to KM.334.000 including construction of CM & CD works and formation of Vepagunta Reservoir and its distributory system including field channels to feed an ayacut of 5000 acres and formation of Adavikothuru Reservoir and it's distributory system including field channels to feed an ayacut of acres under GNSS in Chittoor District under Package.14 of GNSS Phase-II." | Superintending Engineer, T.G.P & GNSS Circle, Srikalahasti | 7.34 |
| 3 | Construction of Trough Aqueduct in place of Damaged B.T.U.T @ KM 116.950, repairs to Pipe U.T @ KM 117.075 and SLB@ KM 117.085 of SSG Canal (TGP) | SE, TGP & GNSS Circle, Tirupati | 5.30 |
| 4 | Earth work in formation, blanketing, trolley refuge and construction of various minor bridges including misc. works like pitching, toe wall etc. from Viramgam to Jhund in connection with Viramgam - Samakhiyali Doubling Project. | Western Railway, Ahmedabad | 5.74 |
| 5 | Earth work in formation, blanketing, trolley refuge and construction of various minor bridges including misc. works like pitching, toe wall etc. from Jhund to Sadla in connection with Viramgam - Samakhiyali Doubling Project. | Western Railway, Ahmedabad | 5.99 |
| 6 | Formation of 'D' Bund (Balance portion) including protection work from KM.0.000 to KM.0.900 of TGP Main canal (from KM.0.580 to KM.0.900 from EL(+)214.000 to EL: (+)226.000) | S.E.T.G.P Circle, Kadapa | 0.98 |
| 7 | Restoration of Bund of Tadukuvagu Reservoir near Thambalapalli(V)in Kalasapadu (M) of YSR Dist.Kadapa | S.E., Irrigation Cricle, Kadapa | 0.60 |



Trough Aqueduct B.T.U.T of SSG Canal (TGP)

WORKS COMPLETED AS A SUB – CONTRACTOR

| Sl. No | Name of the Project | Principal Contractor | Contract Value (Rs. in Crs.) |
|--------|--|---|------------------------------|
| 1 | Earthwork excavation, soft & hard rock, forming embankment, site grading for formation of Service Road, WBM road work and RCC&CC lining including key wall & CC Dowel wall etc for Kutch and Morbi Branch Canal of Gujrat State. | SEW Infrastructure Limited, Hyderabad | 100.54 |
| 2 | Construction of Raw Water Reservoir and Ash Dyke for 2X685 MW Tidla Power Plant (TPP) for GMR Energy Limited at Raikheda Near Raipur. | | 80.64 |
| 3 | Pkg No.14/06-Investigation, Designs and Earth Work excavation of GNSS Main Canal from Km 311.00 of 334.000 formation of Vepagunta Reservoir and formation of Adavikothur Reservoir and its distributory system under GNSS Main Canal in Chittoor Dist. on EPC. | Ratna Infrastructure Projects Pvt. Ltd. | 91.99 |
| 4 | Construction of Earth work, lining, structures and service road for Kutch Branch Canal Ch.93.0 to 100.100 Km (Pkg-I) | NCC Ltd. | 113.65 |
| 5 | Earthwork activities at Shimoga Regional Airport | BM Wire Walls | 17.00 |
| 6 | Excavation of loose soil and excavation forming embankment of SRBC canal from KM 10 to KM 12 & KM 14 to KM 17 | Sushee Hitech | 15.00 |
| 7 | Construction of D1 Type Quarters - 34 Nos, Field Hostel, EDC and ET Hostel at NTPC Simhadri, Vishakhapatnam | SEW Infra-structure Ltd | 13.50 |
| 8 | Formation of Earthdam of Jonnalaboguda balancing reservoir from km0.450 to km0.850 including E.W.excavation & forming embankment of gravity canal from km 8.0to km9.0 of Kalwakurthy lift irrigation scheme Mahabubnagar Dist. | BVSR Constructions | 14.82 |
| 9 | Excavation forming of embankment of Handri Niva Sujala Sravanthi Main Canal from 31 Km to 32 Km at Kurnool District. | Kolan Engineering | 8.50 |
| 10 | Excavation forming embankment of flood flow canal Km 86t 87 of SRSP in Karimnagar District. | Sushee Hitech | 8.57 |
| 11 | Earthwork activities at Gulbarga Regional Airport | Bharat Nirman | 5.00 |
| 12 | Earthwork excavation forming embankment of SRBC canal form Km 2 to 3. | Ratna Constructions | 4.12 |
| 13 | Excavation & forming embankment of Kalvakurthy Canal MGLIS, Mahaboobnagar | Madhucon | 4.00 |
| 14 | Excavation forming of embankment of Handri Niva Sujala Sravanthi Main Canal from 17 Km to 20 Km and km 4at Kurnool District. | Rithwik projects | 2.00 |

WORKS ON HAND AS A PRIME CONTRACTOR (As on 31st July, 2016)

| Sl. No. | Description of Project | CLIENT | Contract Value (Rs.in Crs.) | Work Completed (Rs. In Crs.) | Balance Work (Rs.In Crs.) |
|---------|---|---|-----------------------------|------------------------------|---------------------------|
| 1 | IFFC Project -Construction of Link Canal from Km.0.00 to Km.6.90 and Branch Canal to connect to MMR R/s Canal beyond Thotapally from Km.0.00 to Km.1.250, including CM &CD works in Karimnagar district | SE I&CAD I.F.F.C CIRCLE-II, KARIMNAGAR | 82.12 | 15.00 | 67.12 |
| 2 | IFFC Project from SRSP: Construction of spillway from 16 to 26 Blocks upto Crest level i.e.El.+309.25 mts. Including glacis concrete, pier concrete, slotted Roller bucket concrete and Apron concrete, R/s End pier and R/S NOF 1 to 4 Blocks upto Road Bridge Top level i.e., El.+323.900 mts., R/s D/s Retaining wall concrete and R/s Core wall with all allied components including instrumentation arrangements etc., (excluding Drilling & Grouting, Generator sets, Transformer & Switch yard, Electrification and Formation of Cofferdam) and formation of Right side Earth Bund upto TBL El.+323.00 mts from R/s Retaining wall to end of Earth bund Ch.9.250 Km. including all items, instrumentation arrangements etc. (Excluding R/S OT sluice structure at Ch8.525 KM)- Mid-Manair Near(V), Boinpally(M), Karimnagar Dist. | SE I&CAD I.F.F.C CIRCLE-II, KARIMNAGAR | 101.88 | 25.00 | 76.88 |
| 3 | Construction of Cement Concrete Lining with paver machine & Manually from Km. 0.00 KM to 28.23KM of sirmour distributory with PVC, Joints, C.N.S. Layer of Keoti Main Canal under Bansagar Project. | Govt. of M.P. Water Resources Department | 12.68 | 10.50 | 2.18 |
| 4 | Rehabilitation and Modernization of Minor Canal System under WUA's 173 Mittapalli and 174 Muddunuru of Distributory Committee No.21 Kallur of NSLBC, T.S., | SE, NSLBC O&M Circle, Khammam | 7.43 | 7.23 | 0.20 |
| 5 | Improvements to Nippulavagu from Km 8.100 to Km 11.500, construction of 2 Nos Inlets, Formation of standard Banks -Reach.II of Kurnool District under KC Canal Division, Nandyal | SE, I & CAD, Kurnool,,A.P. | 15.17 | 7.50 | 7.67 |
| 6 | Improvements to Nippulavagu from Km 11.500 to Km 14.600, construction of 2 Nos Inlets, Formation of standard Banks - Reach. III of Kurnool District under KC Canal Division, Nandyal | SE, I & CAD, Kurnool, A.P. | 13.78 | 8.25 | 5.53 |
| 7 | Lining Work Of Nebuha Distributory Km. 0 to 23.52 of Keoti Canal Under Bansager Project | Govt.of M.P. WRD | 15.80 | 10.75 | 05.05 |



IFFC Project MidManair Karimnagar work in Progress



IFFC Project Thotapally Karimnagar work in Progress

WORKS ON HAND AS A SUB CONTRACTOR (As on 31st July, 2016)

| | | | | | |
|---|--|---------------------------------|--------|--------|--------|
| 1 | Construction of Road works, Bridges & Culverts and other associated works for the permanent campus of the Central University of Jammu (CUJ) at Village Bagla, J&K. | SEW Infrastructure Limited | 264.00 | 135.00 | 129.00 |
| 2 | Construction of Earthwork, lining, structures and service road for Morbi Branch Canal Ch.32.92 to 118.86 (Pkg-II) | | 175.20 | 170.09 | 5.11 |
| 3 | Construction of Kutch Branch canal reach Ch.201.206 to Ch.214.740 km Earthwork C.C Lining, structures, Service Road, Gate work, Control Cabin of (Pkg-I; Reach-I) | SEW Infrastructure Limited | 110.00 | 109.4 | 0.66 |
| 4 | Excavation of Gravity Canal including formation of embankment, construction of sluices, CM & CD works, lining of main canal, complete for the reach from KM.41.850 to KM.52.400 (Pranahita Chevella Pkg-IV) | Sushee Infra Pvt Ltd. | 125.80 | 46.01 | 78.92 |
| 5 | FFC from SRSP - Formation of Gouravelly Reservoir with gross capacity of 1.410 TMC Water including construction of H.C. Weir, Forming Earth Dam, Head Regulators on left and right side, formation of diversion Road near Gouravelly (V), Karimnagar Dist. | BVSR Constructions | 43.13 | 25.09 | 18.14 |
| 6 | Execution/Completion of Balance works of Bansagar Canal Project including Canal Lining and Structures in District Sidhi (M.P) Mirzapur and Allahabad(U.P) | Rithwik Projects (P) Ltd | 44.59 | 15.00 | 29.59 |
| 7 | Hamirpur Canal Lining works (Lalithpur Utter Pradesh) | SEW I Ltd. | 30.00 | 16.71 | 13.28 |
| 8 | Construction of Roadbed, Minor & Major bridges between Km.10.00 to Km.35.00 in connection with New B.G. electrified double line in the state of Chhattisgarh over SEC Railway between Kharsia - Dharamjaygarh. | SMS Infrastructure Ltd., Nagpur | 95.29 | 45.00 | 50.29 |

Bridge work of Central University Jammu in Progress



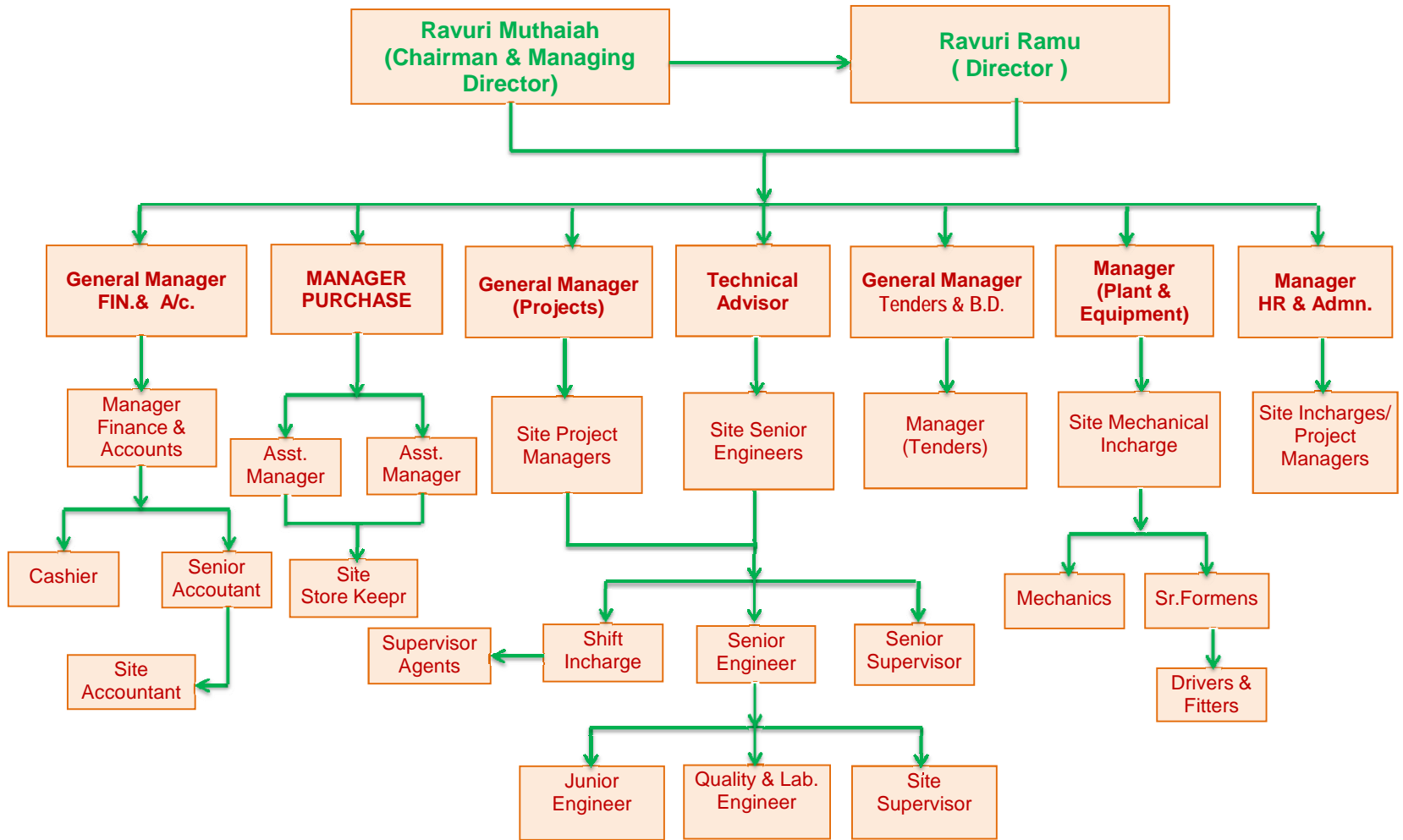
Blanketing Production work of Kharshia work in Progress

Bansagar Canal, Mirzapur Work in Progress (UP)



Excavation of Morbi Branch Canal works in Progress

ORGANISATION CHART



LIST OF PLANT AND MACHINERY AVAILABLE

| Sl. No. | Machinery | Nos. | Make | Model No. | Capacity | Year | Units | | | |
|---------|-----------------------------|--------------------|--------------------------------------|---------------|-------------------|------------------|------------|-----------|--------------|---|
| 1 | Excavators | 38 | Tata Hitachi | Ex 200 LC | 0.9 Cum | 2010 | 1 | | | |
| | | | | | | 2011 | 1 | | | |
| | | | | | | 2013 | 1 | | | |
| | | | Tata Hitachi Zaxis | Ex 370 | 2.1 Cum | 2011 | 1 | | | |
| | | | | | | Volvo | Ex 360 BLC | 2.3 Cum | 2011 | 5 |
| | | | | | | | Ex 210B | 1.22 Cum. | 2011,12 & 13 | 8 |
| | | | Hyundai | Ex 320 | 1.7 Cum | 2011 | 1 | | | |
| | | | Doosan | S300LC-7B | 1.65 Cum | 2011 | 2 | | | |
| | | | | | | 2012 | 2 | | | |
| | | | | | | S225 | 1.22 Cum | 2012 | 2 | |
| 340 DX | 2 Cum. | 2013 | | | | 1 | | | | |
| Volvo | 380 | 2.2 Cum | 2013 | 2 | | | | | | |
| SANY | SY380 | 2.2 Cum. | 2016 | 2 | | | | | | |
| SANY | SY210/240 | 1.22(4)/1.6 Cum(5) | 2016 | 9 | | | | | | |
| 2 | Backhoe Loader | 3 | JCB | 3DX Super HDT | -- | 2013 | 1 | | | |
| | | | CASE | 851 4WD | -- | 2014 | 1 | | | |
| | | | Escorts | DIGMAX-2 | | 2016 | 1 | | | |
| 3 | Tippers | 133 | Man | CLA 25.280 | 16 Cum | 2011/12/13 | 41 | | | |
| | | | Ashok Leyland Utruck | FV2523 | 16 Cum | 2012 | 10 | | | |
| | | | Ashok Leyland | Taurus | 15 Cum | 2007 | 10 | | | |
| | | | | | | 2008 | 11 | | | |
| | | | | | | 2009 | 25 | | | |
| | | | TATA | Tippers | Tippers | 2016 | 10 | | | |
| EICHER | 8025 T | 16 Cum. | 2016 | 26 | | | | | | |
| 4 | Trailer | 2 | TATA | LPS4923TC | 5883 Cft | 2008 | 1 | | | |
| | | | Ashok Leyland | ARTIK40.18 | 5759 Cft | 2008 | 1 | | | |
| | | | 5 | Bulldozers | 13 | BEML Limited | BEML | D-80 | old | 2 |
| D-50 | 2011/2013 | 5 | | | | | | | | |
| D-65 | 2012/2013 | 3 | | | | | | | | |
| D-65-1 | 2016 | 2 | | | | | | | | |
| Dozco | BD65-1 | BD-65-1 | 2016 | 1 | | | | | | |
| 6 | Batching Plant | 7 | Nilkanth | NE30 | 30 Cum/Hr | 2012 & 2016 | 4 | | | |
| | | | | NE30 | 30 Cum/Hr | 2011 | 2 | | | |
| | | | | NE50 | 50 Cum/Hr | 2012 | 1 | | | |
| 7 | Concrete Mixer | 2 | Ajax Concrete Mixer with self loader | ---- | 4 Cum | 2009&2015 | 2 | | | |
| 8 | Transit Mixers | 22 | Ashok Leyland & Greaves cotton | ---- | 6 Cum | 2011, 2012 | 22 | | | |
| 9 | Concrete Pumps | 2 | Aquarius | 703D | 100 Mtr | 2011 | 1 | | | |
| | | | Swing Stetter | ---- | 1800X | 2012 | 1 | | | |
| 10 | Boom Placer | 2 | Swing Stetter | ---- | 18m & 36m length | 2011&2012 | 2 | | | |
| 11 | Concrete Paver | 7 | Diamond | 720 | | 2011, 2012 | 7 | | | |
| 12 | Motor Graders | 2 | CAT | ---- | 120H -12FT Blade | 2009 | 1 | | | |
| | | | BEML | ---- | BG605-12 FT Blade | 2011 | 1 | | | |
| 13 | Vibrator Soil Compactors | 10 | L&T, BOMACO, ESSCORTS & VOLVO | 110 D | ---- | 2009,10,11 & 16 | 10 | | | |
| 14 | Tata Lebrari Soil Compactor | 1 | Tata Lebraro | VM03 | ---- | 2012 | 1 | | | |
| 15 | Sheep Foot Roller | 1 | ESSCORTS | PAD FO | ---- | 2016 | 1 | | | |
| 16 | Vibratory Plate Compactor | 1 | Doosan | AKT1000 | ---- | 2012 | 1 | | | |
| 17 | Tandem Roller | 1 | CASE | 450 DX | ---- | 2014 | 1 | | | |
| 18 | Water Tankers | 14 | Ashok Leyland | ---- | 5000 Ltrs. | 2010, 2011, 2012 | 5 | | | |
| | | | | ---- | 8000 Ltrs. | | 2 | | | |
| | | | | ---- | 12000 Ltrs. | | 7 | | | |
| 19 | Diesel Tankers | 3 | Ashok Leyland | ---- | 8000 Ltrs. | ---- | 1 | | | |
| | | | TATA | ---- | 10000 Ltrs. | ---- | 2 | | | |

LIST OF PLANT AND MACHINERY AVAILABLE

| Sl. No. | Machinery | Nos. | Make | Model No. | Capacity | Year | Units |
|---------|-------------------------------|------|----------------------------|------------|--------------|---|-------|
| 20 | Welding Machines | 25 | Advani - Electric | ---- | 450 Amps | 2010, 2011, 2012, 2013 | 20 |
| | | | Gas welding | ---- | ---- | | 5 |
| 21 | DG Sets | 32 | Kirloskar | ---- | 10 KV | 2009, 2010, 2011, 2012, 2013 & 2014 | 5 |
| | | | | ---- | 20 KV | | 4 |
| | | | | ---- | 15 KV | | 4 |
| | | | | ---- | 30 KV | | 6 |
| | | | | ---- | 42 KV | | 2 |
| | | | | ---- | 62 KV | | 2 |
| | | | | ---- | 82.5 KV | | 2 |
| | | | Gemmco | ---- | 30 KV | | 1 |
| | | | | ---- | 125 KV | | 5 |
| 22 | Tractors | 8 | Dozer HMT Jatar | ---- | 75 HP | 2010 | 2 |
| | | | Eicher | ---- | | 2011&2012 | 2 |
| | | | John Deere Tractor Loder | ---- | 5310 | 2011,12,13 | 4 |
| 23 | Compressors | 8 | LG Compressor with Rig set | ---- | 450-150 | 2004 | 4 |
| | | | LG Compressor with Rig set | ---- | 450-150 | 2008 | 4 |
| 24 | Electrical Motor Water Pumps | 44 | CRI | ---- | 7.5 HP | 2010, 2011 | 6 |
| | | | CRI | ---- | 10 HP | | 13 |
| | | | CRI | Heavy Duty | 40 HP | ---- | 5 |
| | | | CRI, Suguna, Crompton | ---- | 1 HP to 5 HP | 2012 & 2013 | 20 |
| 25 | Oil Engine | 8 | Kirloskar | ---- | 10 HP | 2010 | 8 |
| 26 | Utilities | 7 | Tata 709 | ---- | 8 MT | 2011 | 1 |
| | | | Tata 407 | ---- | 4 MT | 2011 | 1 |
| | | | Bolero campher | ---- | ---- | 2004,06,07,08 | 4 |
| | | | Mahendra Jeep | ---- | ---- | 2011 | 1 |
| 27 | Reverse Drum Mixer | 2 | ---- | ---- | 0.8 CUM | 2011 | 2 |
| 28 | Wet Mix Plant (Pug Mill)-Drum | 1 | SHITLA | WM-100 | 100-120 TPH | 2013 | 1 |
| 29 | Jack Hammers | 5 | ---- | ---- | ---- | ---- | 5 |
| 30 | Centering Material | | ---- | ---- | 20,000 Sqm | 2011,12, 13 & 14 | -- |
| 31 | Pin Vibrators | 20 | ---- | ---- | ---- | 2009/2012 | 20 |
| 32 | Rod bending Machine | 12 | ---- | ---- | ---- | 2009/2012 | 12 |
| 33 | Rod cutter | 12 | ---- | ---- | ---- | 2009/2012 | 12 |
| 34 | Concrete Millers | 12 | ---- | ---- | ---- | ---- | 12 |
| 35 | Concrete Lining Pavers | 6 | ---- | ---- | ---- | ---- | 6 |
| 36 | Wagon Drillers | 4 | ---- | ---- | ---- | ---- | 4 |

LIST OF TECHNICAL/ADMINISTRATIVE PERSONNEL AVAILABLE

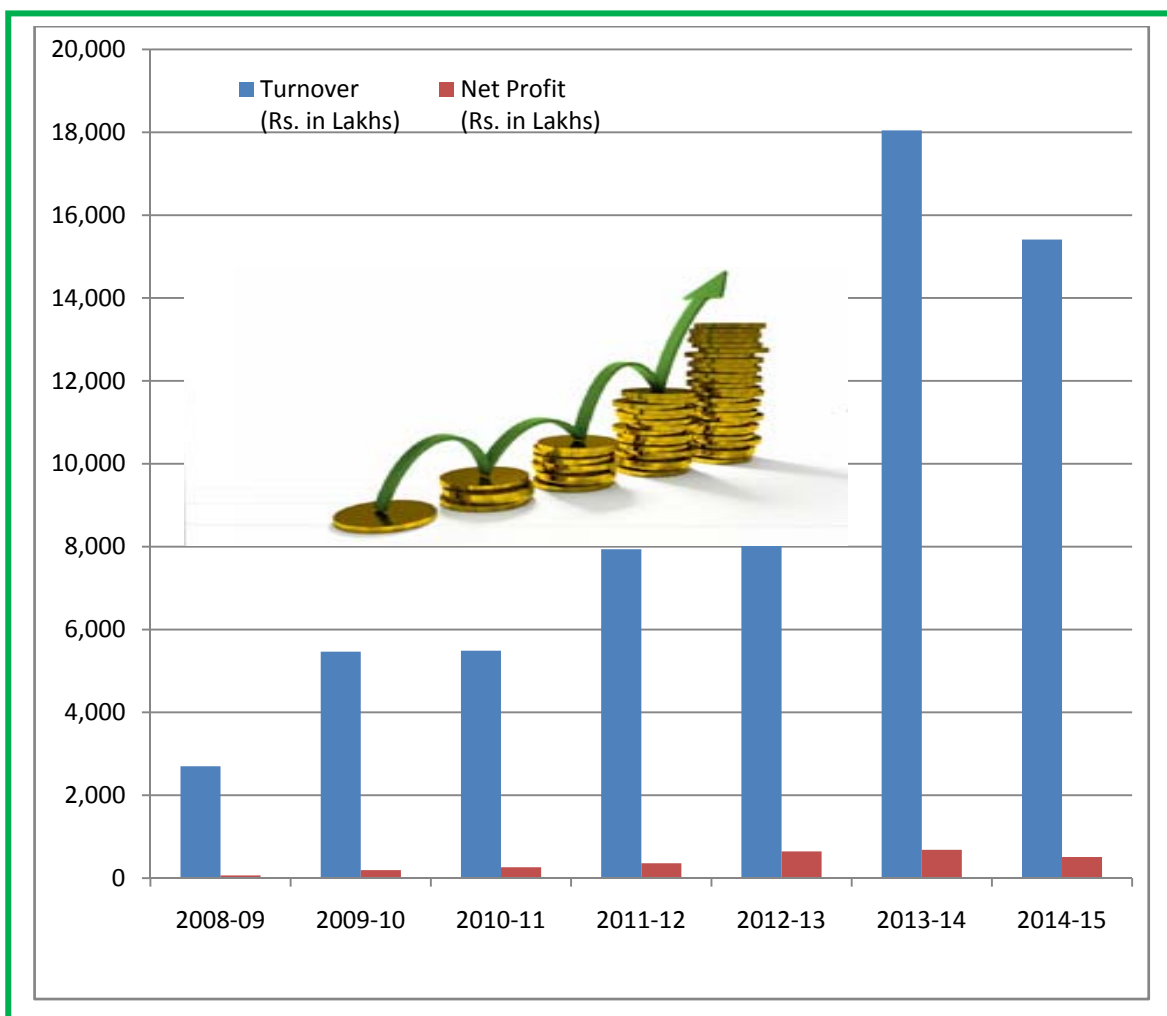
| Sl. No. | QUALIFICATION | Expertise in | Nos. |
|---------|--------------------------------|---------------------------------------|------|
| 1 | M.Tech (Civil) | Structural Engineering | 2 |
| 2 | B.Tech (Civil) | Irrigation Projects | 8+ |
| 3 | B.Tech (Civil) | Survey & Billing | 2+ |
| 4 | B.Tech (Civil) | Design & Auto CAD Engineers | 2+ |
| 5 | B.Tech (Civil) | Roads and Highways Engineers | 3+ |
| 6 | Diploma (Civil) | Irrigation Projects | 24+ |
| 7 | Diploma (Civil) | Survey & Billing | 5+ |
| 8 | Diploma (Civil) | Lab. Technician | 12+ |
| 9 | B.Tech (Mechanical) | Maintenance of Construction Equipment | 2+ |
| 10 | Diploma (Mechanical) | Maintenance of Construction Equipment | 5+ |
| 11 | Chartered Accountants and ICWA | Finalisation of Accounts | 2+ |
| 12 | Senior Accountants | Accounts | 10+ |
| 13 | M.B.A. (Marketing & Finance) | Purchasing Equipment and Materials | 3 |
| 14 | M.B.A./Diploma (HR) | HR & Administration | 5+ |

OTHER TECHNICAL/SKILLED STAFF AVAILABLE

| Sl. No. | MEN POWER | Nos. |
|---------|---------------------|------|
| 1 | Welders | 20+ |
| 2 | Fitters /Helpers | 80+ |
| 3 | Formans | 12+ |
| 4 | Supervisors | 60+ |
| 5 | Electricians | 12+ |
| 6 | Drivers & Operators | 320+ |

FINANCIAL TURNOVER

| Financial Year | Turnover (Rs. in Lakhs) | Net Profit (Rs. in Lakhs) |
|----------------|----------------------------|------------------------------|
| 2005 - 2006 | 2,088.00 | 43.55 |
| 2006 - 2007 | 1,739.00 | 42.40 |
| 2007 - 2008 | 1,777.00 | 29.92 |
| 2008 - 2009 | 2,700.00 | 65.22 |
| 2009 - 2010 | 5,465.00 | 192.54 |
| 2010 - 2011 | 5,490.00 | 262.60 |
| 2011 - 2012 | 7,936.00 | 359.22 |
| 2012 - 2013 | 13,432.00 | 645.05 |
| 2013 - 2014 | 18,045.44 | 683.75 |
| 2014 - 2015 | 154,12.89 | 508.54 |



CONSTRUCTION OF EARTHWORK, LINING, STRUCTURES AND SERVICE ROAD FOR MORBI BRANCH CANAL PACKAGE –II, GUJRAT STATE



Quantity Executed:

E.Exc./ F&F/HR/Banking : 54,17,282 Cum.



Quantity Executed:

CC Lining: 11,37,628 Sqm.

R.C.C. Lining : 17,915 Sqm.



CONSTRUCTION OF KUTCH BRANCH CANAL INCLUDING EARTHWORK, C.C LINING, STRUCTURES (PACKAGE-I), RAPAR, GUJRAT STATE



**CONSTRUCTION OF KUTCH BRANCH CANAL INCLUDING EARTHWORK,
CONCRETE LINING, STRUCTURES (PACKAGE-I), GUJRAT STATE**



Canal Lining :4,20,000 Sqm.



CONSTRUCTION OF KUTCH BRANCH CANAL INCLUDING EARTHWORK, C.C LINING, STRUCTURES (PACKAGE-I; REACH -1), BACHOW, GUJRAT STATE

Quantity Executed:

EWE/SR/HR/Embankment: 22,60,279 M3



**R.C.C.: 60,000 M3 ;
CC Lining : 4,80,000 Sqm.
Steel : 5,000 MT**





Earthwork in formation, Blanketing, Trolley Refuge and Minor Bridges from Viramgam to Sadla of Viramgam - Samakhiyali Project , Western Railway, Gujrat.



**CONSTRUCTION OF RAW WATER RESERVOIR AND ASH DYKE FOR 2 X 685 M.W. TIDLA
POWER PLANT FOR GMR ENERGY LIMITED AT RAIKHEDA NEAR RAIPUR, C.G.STATE**



Quantity Executed:
**Earthwork Excavation &
Embankment : 27,00,000 M3**



Quantity Executed:
**Brick Lining : 5.40 Lakhs Sqm
Ash Bricks Used: 2.40 Crores**

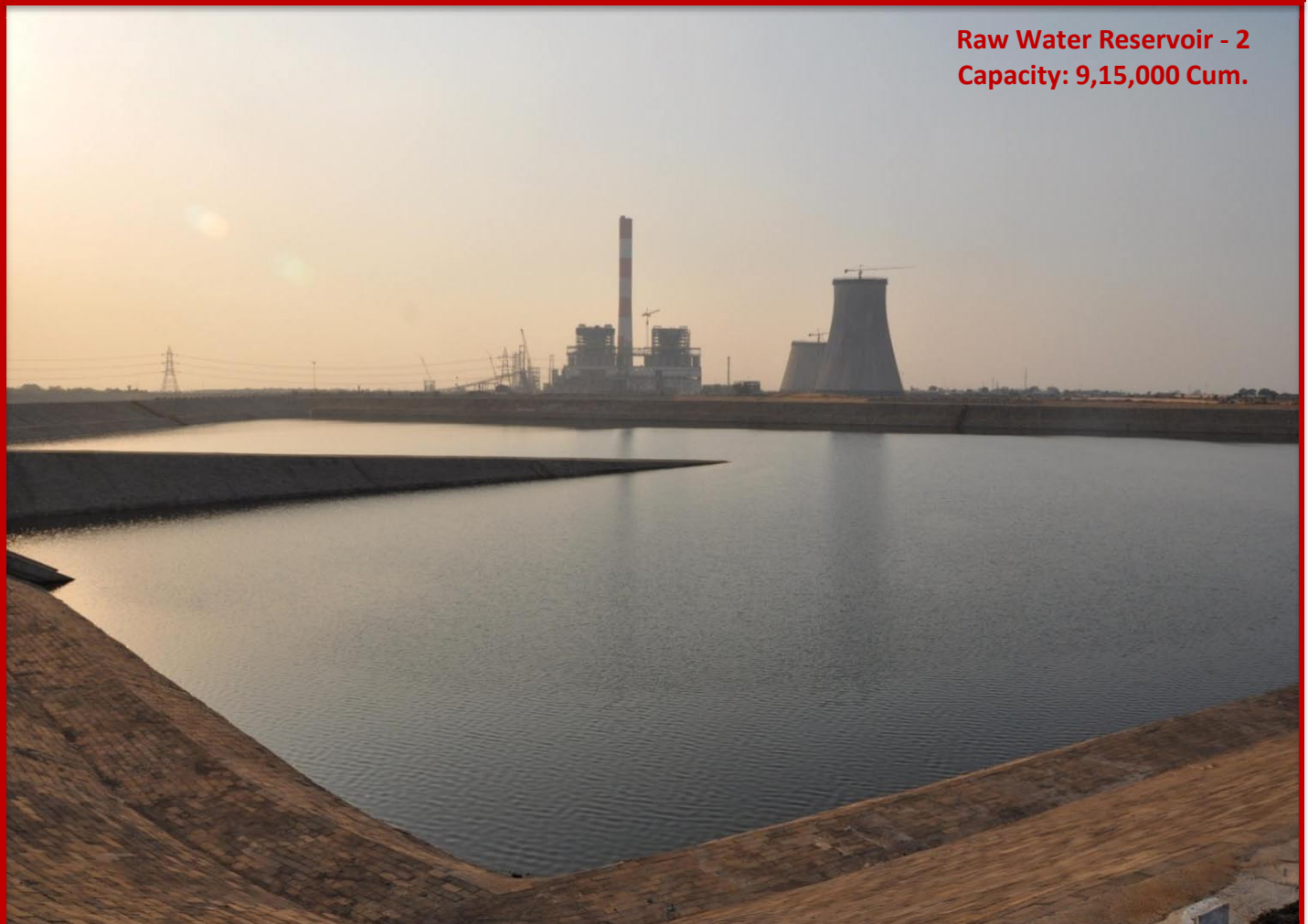
**CONSTRUCTION OF RAW WATER RESERVOIR AND ASH DYKE FOR 2 X 685 MW TILDA
POWER PLANT FOR GMR ENERGY LIMITED AT RAIKHEDA NEAR RAIPUR, C.G.STATE**

**Raw Water Reservoir - 1
Capacity: 5,25,000 Cum.**



**Quantity Executed:
Concrete Block Lining : 2,60,000 Sqm.**

**Raw Water Reservoir - 2
Capacity: 9,15,000 Cum.**



EXCAVATION OF GRAVITY CANAL INCLUDING FORMATION OF EMBANKMENT, CONSTRUCTION OF SLUICES, CM & CD WORKS, LINING OF MAIN CANAL OF PRANAHITA CHEVELLA PROJECT - PACKAGE -(IV)



Earthwork Excavation: 65,64,000 Cum.
Embankment : 8,45,000 Cum
R.C.C. : 20,000 Cum.
CC Lining : 9,75,000 Sqm.





Trough Aqueduct of S.S.G Canal (TGP), Srikalahasti



**EARTHWORK EXCAVATION, FORMING EMBANKMENT OF MALYALA APPROACH CHANNEL,
AVR HNSS PROJECT PHASE-1 PKG-1, KURNOOL, A.P.**



Hard Rock Excavation done: 9.35 Lakhs Cum



TOTAL WORK COMPLETED IN FIVE MONTHS PERIOD

EARTHWORK EXCAVATION OF GNSS MAIN CANAL AND FORMATION OF VEPAGUNTA AND ADAVIKOTHUR RESERVOIRS OF PACKAGE No.14, CHITTOR DISTRICT OF A.P.



Quantity Executed:
Earthwork Excavation
including all soils, F&F and
Hard Rock : 28,52,924 M3



Quantity Executed:
Embankment : 40,69,433 Cum



Drilling : 9526 Rmt.
Grouting : 1032 MT



Quantity Executed:
Re-inforcement Steel : 201 MT
Rocktoe : 64,376 Cum

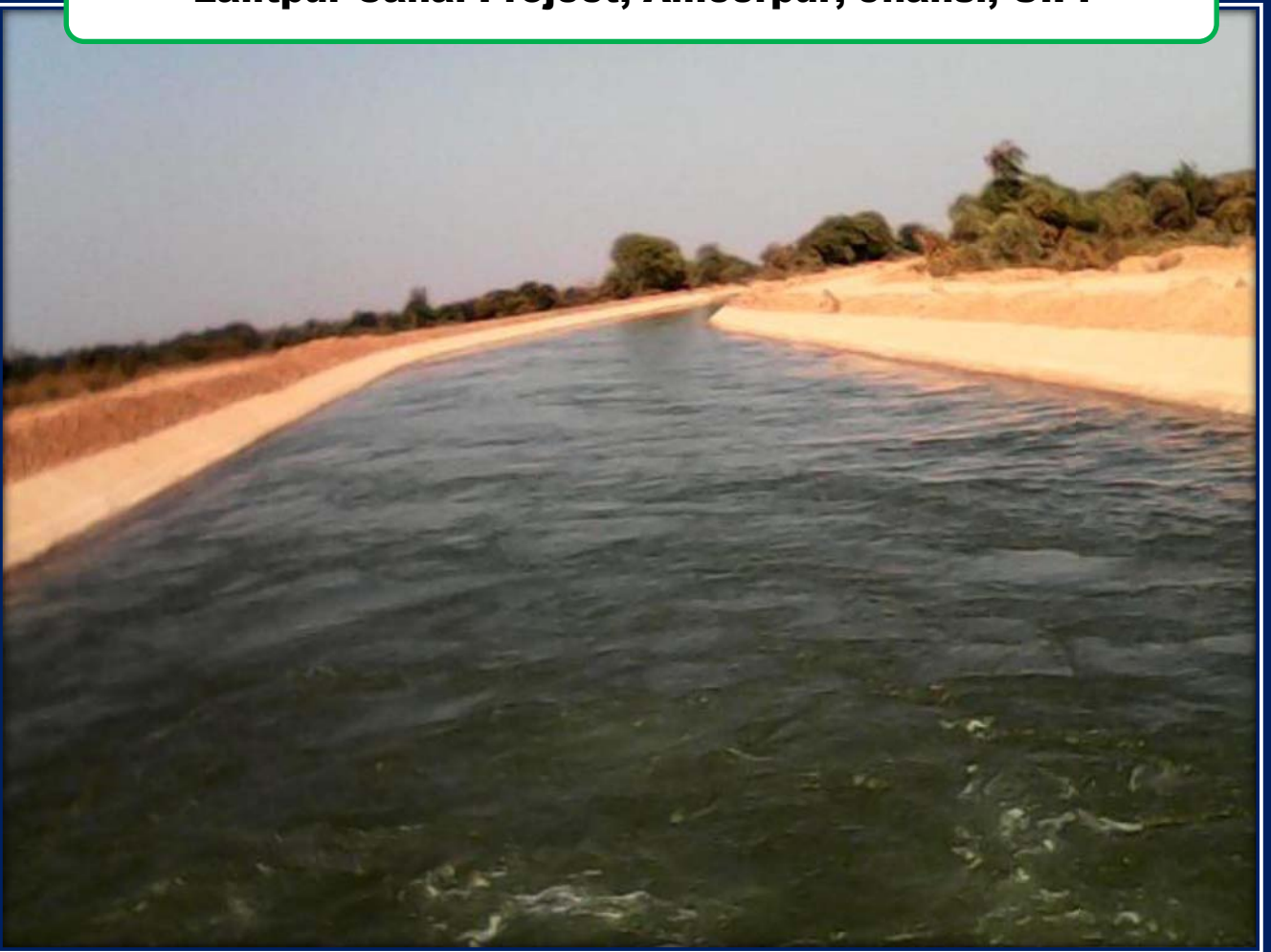


**CONSTRUCTION OF D1 TYPE QUARTERS -34 NOS., FIELD HOSTEL, EDC AND ET HOSTEL
AT NTPC SIMHADRI, VISAKHAPATNAM, ANDHRA PRADESH**





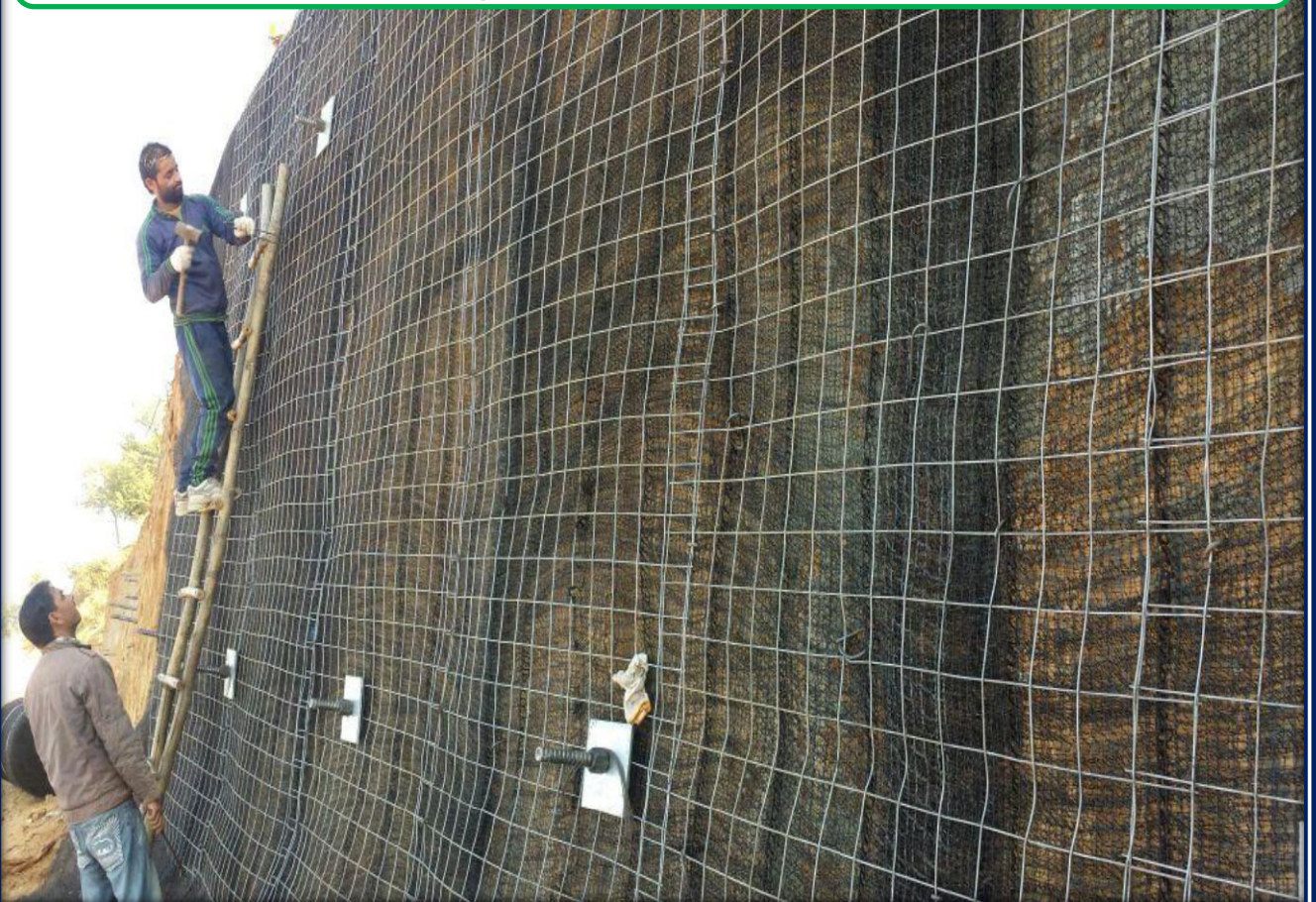
Lalitpur Canal Project, Ameerpur, Jhansi, U.P.



Construction of Road, Bridges, Culverts and other associated works for the Central University, J&K State



Cut slope protection works through soil nailing technique in progress at CUJ, Jammu



Construction of Road, Bridges, Culverts and other associated works for the Central University, J&K State



Construction of Road, Bridges, Culverts soil nailing works for the Central University, J&K State



20/04/2016 03:51 PM



20/04/2016 03:47 PM

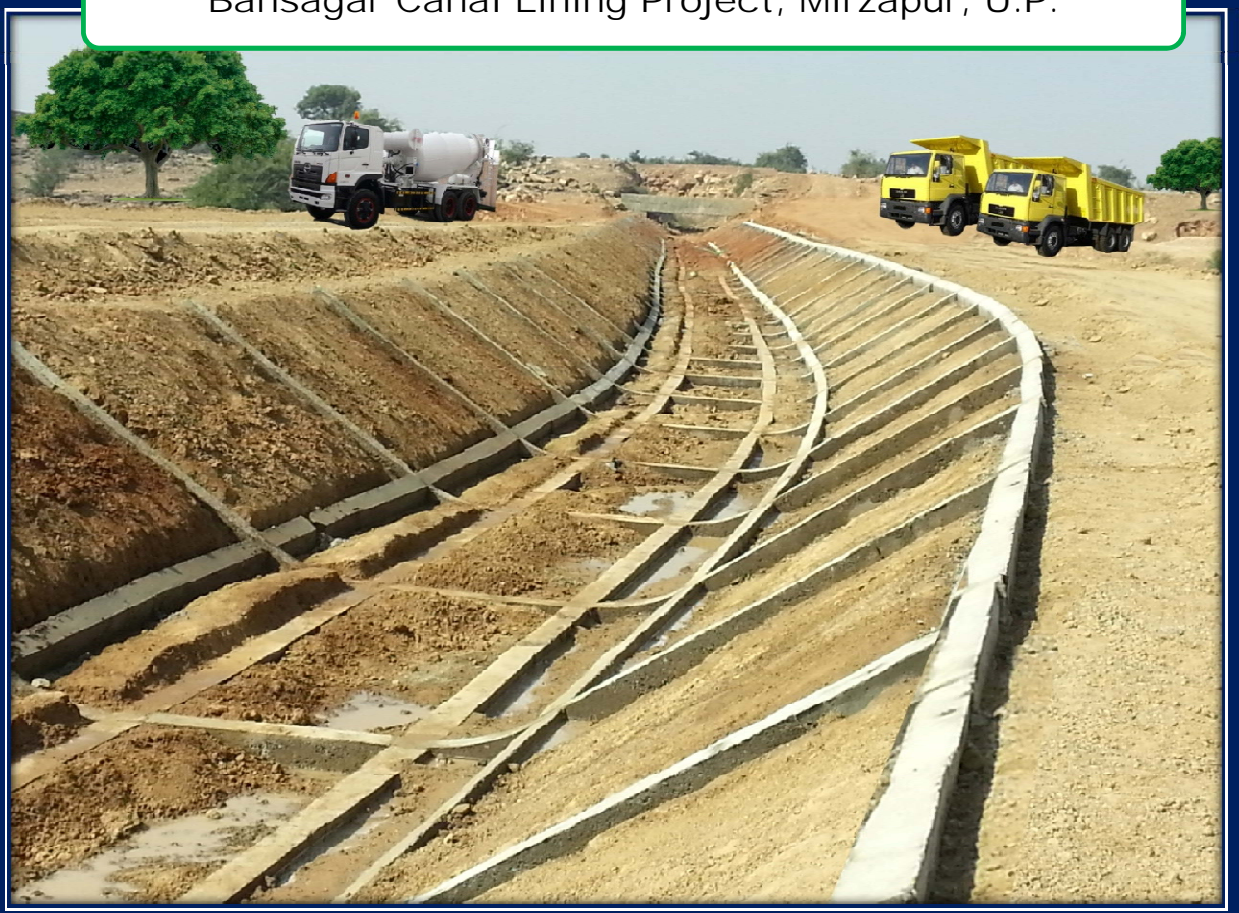


NTPC Simhadri Township Project, Visakhapatnam, A.P.





Bansagar Canal Lining Project, Mirzapur, U.P.



Construction of Roadbed, Minor and Major Bridges are in progress, between Kharsia - Dharamjagarh in Chattisgarh



Construction of Roadbed, Minor and Major Bridges are in progress, between Kharsia - Dharamjagarh in Chattisgarh





POWERED BY

INTELLIGENT Entrepreneur

On



CNBC TV 18 Emerging India Awards 2013 Nominee

SRRC was nominated to the top three in the nominations for the Emerging India Awards 2013 by ICICI Bank, CNBC-TV18 & CRISIL in the field of Infrastructure, which was assessed by CRISIL.

Corporate Office:

**# H.No.8-2-269/27/B,
Sagar Society, Street No.2,
Banjara Hills, Hyderabad-500 034
Phone 040-40064689 / 23553737
Fax: 23555456
Email: srrcho@gmail.com**

Registered Office:

**D.No.6-3-597/A/1/2/A/201,
Bhavya's Lakshmi Krishna Residency
Venkata Ramana Colony,
Khairatabad, Hyderabad-500 004**

web site: www.srrconstructions.com